

Will Your House Survive a Wildfire?

Get your **free** wildland fire home assessment done today!

Every year, thousands of homes are damaged or destroyed due to wildfire. If you have a house in the wildland-urban-interface, it is more susceptible to this natural disaster. Both lives and properties are at risk, but YOU can take the necessary steps to protect your house and prepare your family.

Fire Safe Sonoma has teamed up with The Sonoma County Department of Transportation and Public Works and is offering a limited number of free home wildfire safety assessments in your area, as part of a CAL FIRE grant funded project. If you received this notice you are automatically eligible for this valuable service!

Act fast because there only a limited number of assessments funded.

To apply call Fire Safe Sonoma at (707) 676-4600 and us leave a message or send us an email to firesafe.sonoma.org@gmail.com.

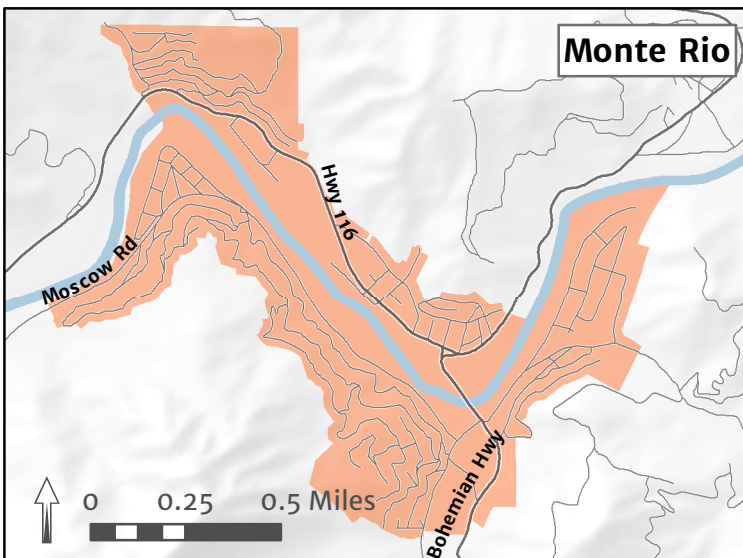
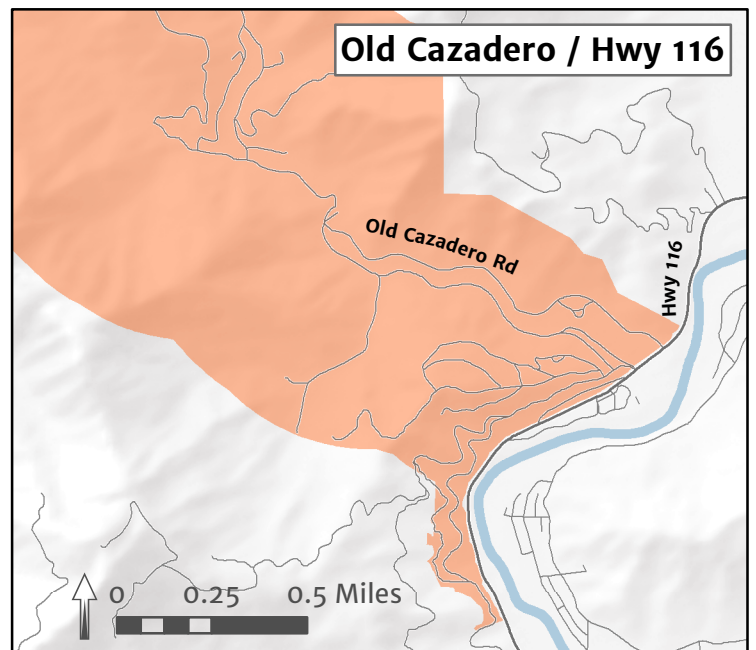
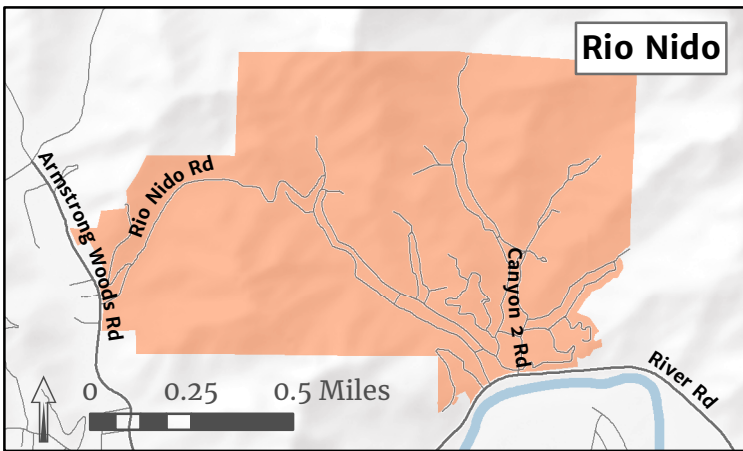
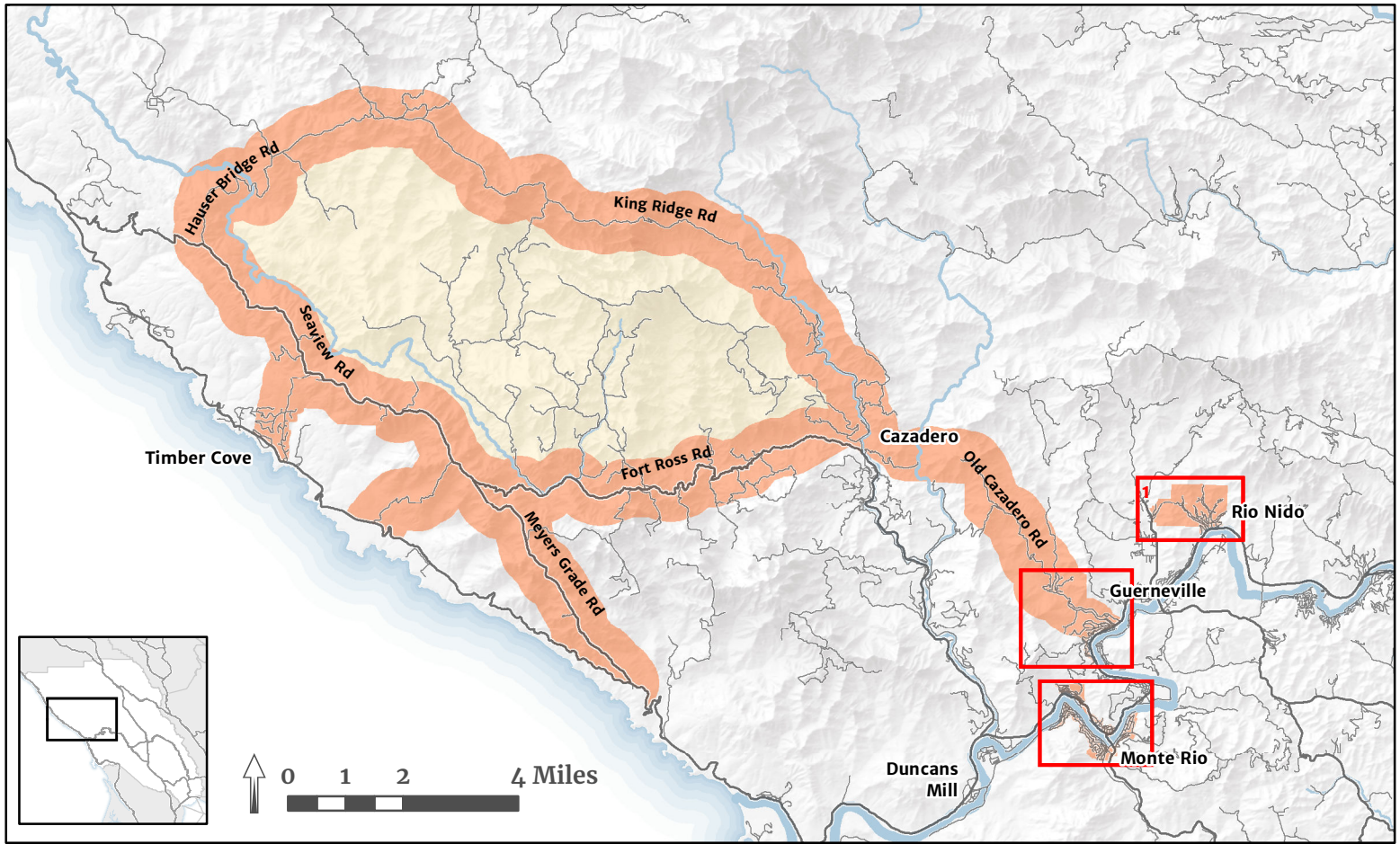
Be sure to mention the “Wildland Fire Assessment Project” and provide your property address

This service is part of the Northwest Roadway Safety, Fuels Reduction, and Community Chipper and Engagement Project, a Sonoma County Transportation and Public Works grant funded project. The project is intended to reduce risks related to future wildfires by removing vegetation identified as hazards to firefighters and the public, in the interest of creating safe and smooth evacuations during an emergency.

As part of this project, **Fire Safe Sonoma** is providing education and outreach efforts to encourage property owners in the targeted area to clear hazardous vegetation from their properties and to take advantage of the **Sonoma County Fire Chipper Program**.

The Northwest Roadway Safety, Fuels Reduction, and Community Chipper and Engagement Project is part of California Climate Investments, a statewide program that puts billions of Cap-and-Trade dollars to work reducing greenhouse gas emissions, strengthening the economy, and improving public health and the environment— particularly in disadvantaged communities.





Project Map: 17-FP-LNU-0097

- Area Impacted by Project
- Fort Ross Gap